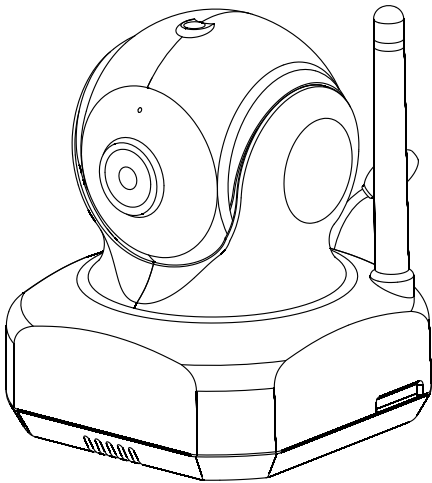


Smart iCAM

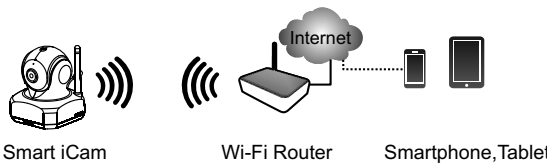
Remote HD Wi-Fi Camera

User's Manual



Please read carefully before using this equipment.

Watch the things that matter to you anytime and anywhere



Smart iCAM is a wireless network camera. It can connect with your smartphone or tablet via wireless technology, and monitor everything that matters to you on your smartphone or tablet anywhere and anytime.

Before you start you need:



iPhone, iPad, Android smartphone or Android tablet



Smart iCAM



Wi-Fi router

1

3.3.1 Connect iPhone/iPad or Android mobile to the camera

1. Turn on the Wi-Fi of your iPhone/iPad or Android mobile.
2. Tap the screen to select “Smart_iCAM_XXXXXX” under Wi-Fi Networks. Enter the password and tap **connect** button. Default password is “12345678”.

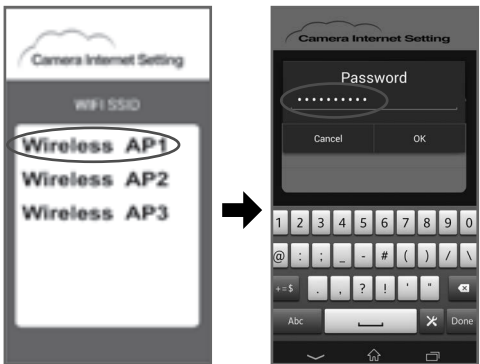


3. After Wi-Fi connected, open the App of “Smart iCAM” and will see the welcome screen.



4

4. Select Wi-Fi SSID for camera Internet setting. After welcome page, the APP will reveal all the Wi-Fi SSID in range. Tap the SSID used to connect Smart iCAM and enter the password for the Wi-Fi AP/Router. Please wait for a minute while system reboot, and the LED will be in green light. The initial setup is completed.



- Note 1:** SSID is a wireless network identity code that is also regarded as name of wireless LAN. The major function of SSID is to distinguish different wireless LAN. In Wi-Fi wireless network, SSID represents Wireless Access Point's network name during broadcast.
- 2: If you cannot find the Wi-Fi network you want to connect, please check the Wi-Fi network is available and functions in range again.
 - 3: If you enter wrong password of SSID, the camera will beep 3 times and reset to factory default automatically. Please close App and follow the point 3.3 instructions to setup camera again.
 - 4: If the camera cannot connect to the Internet, the power/status LED will glow orange light. Please check your wireless AP/Router and make sure Wi-Fi connection is not out of range.
 - 5: Make sure your mobile connected to the Wi-Fi AP/Router before.

5

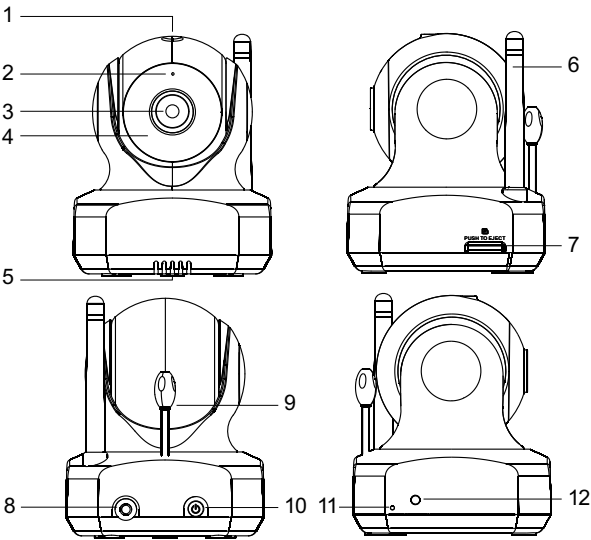
EN

Package Contents

- One Camera
- Two Cable Clips
- One Adapter
- This User's Manual
- One Screw and One Wall Anchor

2 Product Layout

Camera



- 1.Light sensor
- 2.Microphone
- 3.Camera lens
- 4.Infrared LEDs
- 5.Speaker
- 6.Antenna
- 7.Micro SD Card slot
- 8.Power adapter socket
- 9.Temperature sensor
- 10.Power ON/OFF switch
- 11.Reset button
- 12.Power/Status LED

2

3 Getting Started

3.1 Download Smart iCAM app

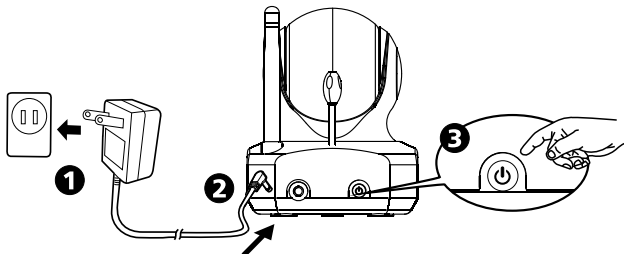
To get started, key in the keyword “Smart iCAM” and download the app from Apple App Store (iPhone/iPad) or Google Play Store (Android).



3.2 Power Supply

1. Connect power adapter to back of the camera and plug into power outlet.
2. Push the power button on the camera and the LED should light up.

- Note 1:** When you power the camera on, the camera need to take around 30 to 60 seconds for initial setting.
- 2: Push the power button around 10 seconds to turn off camera.

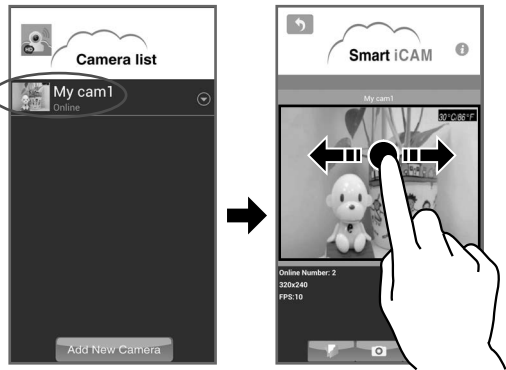


3.3 First-time Setup

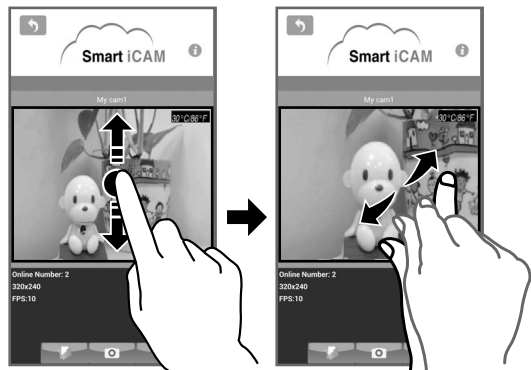
3

3.3.2 View live video

1. Tap the camera icon in Camera List and you can access the live video.
2. Tap and drag horizontally to pan through the video. (Only for Pan & Tilt model)



3. Tap and drag vertically to tilt through the video. (Only for Pan & Tilt model)
4. Tap the video and slide your fingers together or apart to zoom in or out manually.
5. Zoom in to a video and drag your finger around the screen.

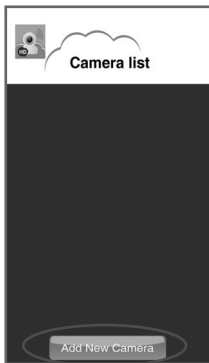


6

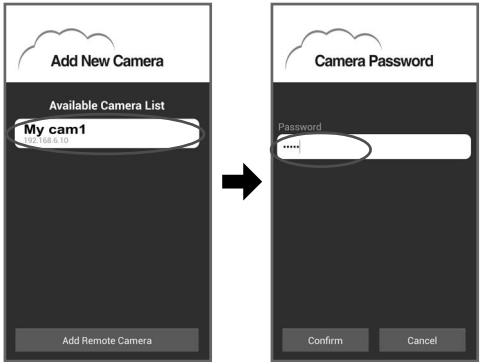
3.4 Share the camera (Multi-user)

3.4.1 Setup in Local Area Network (LAN)

1. Download the App of Smart iCAM.
2. Open the App of Smart iCAM.
3. Tap “Add New Camera” button on Camera List page.



4. Tap the camera name you want to add from “Available Camera List”, enter the password and confirm. Default password is “admin”.



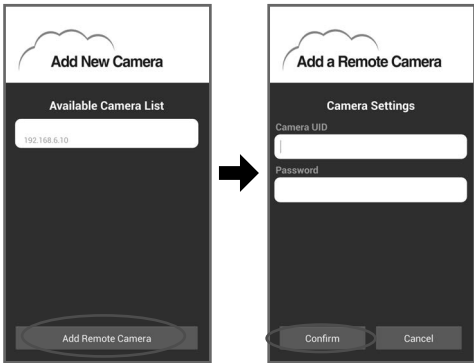
7

5. Tap the camera icon in Camera List and watch the live video.

💡 **Note :** If you enter wrong password of camera, tap the camera icon and input correct password again.

3.4.2 Setup in Wide Area Network (WAN) or in Internet

1. Download the App of Smart iCAM.
2. Open the App of Smart iCAM.
3. Tap “Add New Camera” button on Camera List page.
4. Tap “Add Remote Camera” button on Add New Camera page, and enter Camera UID and Password and then confirm.



5. Tap the camera icon in Camera List and watch the live video.

💡 **Note 1:** UID is a unique identified code of each camera. You can read UID by tap the **i (information)** icon in live video page.

- 2: If you enter wrong password of camera, tap the camera icon and input correct password again.

3.5 Add more cameras (Multi-camera)

Follow the point 3.3 instructions to complete the first- time setup.

💡 **Note :** Up to 10 cameras can be added.

8

1. Information

Tap he icon to view APP version、 camera UID、 Firmware version.

2. Camera name

3. Temperature

4. Photo folder

Tap the icon and see all of the photos taken before.

5. Snapshot

Tap the icon and save a snapshot of the camera on your iPhone, iPad or Android mobile.

6. Audio ON/OFF

Tap the icon and turn off audio. Tap it again and turn the audio on.

4.2 Camera Setting

Tap the button on camera list to set up.



💡 **Note :** For security and management consideration, some items of camera setting are not enabled when P2P connection via WAN or Internet.

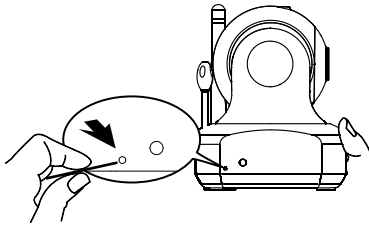
10

3.6 Reset the camera to factory defaults

While the camera is powered on, press the reset button by small object or pin (i.e. paper clip) for 10 seconds and release it. The camera will beep 3 times and start to reset to factory default. It will take around 1 minute to finish reset.

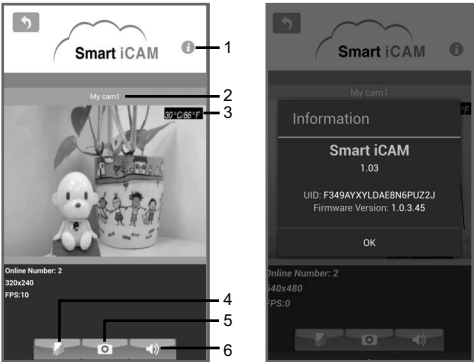
💡 **Note 1:** If you did not hear the beep, please try again to press the reset button.

- 2: When you change wireless AP/Router or forget camera password, you need to reset the camera to factory defaults and follow the steps of “3.3 First time set up” to set up the camera again.



4 Operation Mode

4.1 View Live Video



9

6. Record

Tap the icon to enable HD 720p recording, tap it again to stop recording.

💡 **Note 1:** Only when the micro SD card is inserted to camera, the recording will be effective.

- 2: Only support micro SD card up to 32G.

- 3: If motion detection is not activated, camera will record continuously.

- 4: To playback video file

- Place the micro SD card into a SD card adapter.
- Connect the card adapter to computer.
- Use media player like VLC, MS media player or others to playback the video file.

⚠ **Do not remove memory card while recording is still in progress. It is recommended to power the camera off when you insert or eject memory card. Hot swapping may cause your memory card damage.**

7. VOX Detection (Voice Operated Transmission)

- a. Smart iCAM supports voice detection to trigger push message alert and even playback a pre-recorded voice or melody.

- b. Drag on the bar to enable VOX and select sensitivity level. With the level set to high, the camera microphone will detect lower sounds.

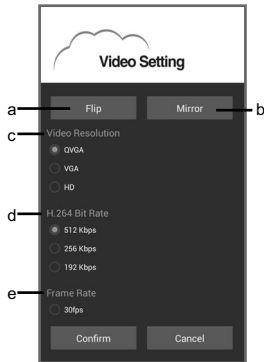
- c. Tap the **Voice Recorder** button to start to record a voice or melody that will be played back from camera when VOX is activated. Tap the **Stop** button to stop recording. Maximum recording time is 10 seconds. Only when the micro SD card is inserted to camera, the **Voice Recorder** will be effective.

- d. The interval between VOX checks is 1 minute.

12

- d. Bit rate: the number of bits that are conveyed per second in telecommunications. The higher the rate, the greater the bandwidth consumption.

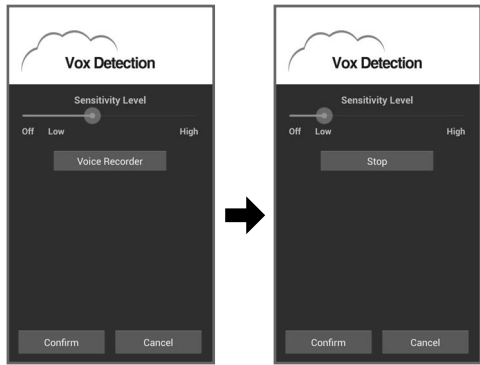
- e. Frame Rate: The frequency at which camera produces unique consecutive images called frames. The higher frame rate, the smoother video will appear but the more processing power and system bandwidth is required. Frame rate varies according to the network condition, the mobile performance, the image resolution and the object situation.



💡 **Note :** Following items of camera setting will be disabled when your mobile and camera are not on the same network(SSID).

- Change Name/Password
- Motion Detection
- Record
- VOX Detection
- Video Setting

14



💡 **Note 1:** When using iPhone or iPad: If you turn on the VOX function and press the home button on your iPhone or iPad to exit the App, the VOX function can work and remind you the audio event of camera. If you want to exit the App completely, please double-click home button on your iPhone or iPad when it is at home screen status. When you exit the App completely, the VOX function can't work.

- 2: When using Android mobile: If you turn on the VOX function and select **Background** when tap return or back arrow key on smartphone, the VOX function can work and remind you the audio event of camera. If you want to exit the App completely, select **Exit**. When you exit the App completely, the VOX function can't work.

8. Video Setting

- a. Flip: Tap **Flip** button when mounting the camera on the ceiling.
- b. Mirror: Mirror or invert the image.
- c. Video Resolution: the number of distinct pixels in each dimension that can be displayed, i.e. HD (1280X720) /VGA(640X480) /QVGA(360X240).

13

Troubleshooting

Cannot connect the camera to your smartphone/tablet through Wi-Fi router or 3G/4G mobile network

- Make sure the power plug is pushed all the way in.
- Make sure the camera is turned on and power/status LED glows green.
- Make sure the camera and the Wi-Fi router are within range of each other.
- Make sure your smartphone/tablet is connected to the Internet through Wi-Fi or 3G/4G mobile network.

Video streaming is slow or lags

- If there is a microwave oven in use near the camera or Wi-Fi router, remove the microwave oven or turn it off.
- Make sure the camera and the Wi-Fi router are within range of each other.
- The speed of video feed from the camera depends highly on the speed of the connection you are using.
- The Internet speed either from your Wi-Fi network or 3G/4G mobile network has a high impact on the performance of the product. The faster and more stable connection speed, the faster you can see the video from the camera.
- Lower the video resolution and frame rate.

Care and Maintenance

- Keep all parts and accessories out of children's reach.
- Fingerprints or dirt on the lens surface can adversely affect camera performance. Avoid touching the lens surface with your fingers.
- Should the lens become dirty, use a blower to blow off dirt and dust, or a soft, dry cloth to wipe off the lens.
- Keep the camera dry. Precipitation, humidity, and other liquids containing minerals will corrode electronic circuits.
- Do not use or store in dusty, dirty areas.
- Do not store in hot areas. High temperatures can shorten the life of electronic devices and warp or melt certain plastics.
- Do not store in very cold areas. When the system warms up (to its normal temperature), moisture can form inside the case, which may damage electronic circuit boards.
- Do not attempt to open the case. Non-expert handling of the device may damage the system.
- Avoid dropping or strong shocks.
- Operate this product using only the power supply included or provided as an accessory.
- Do not overload electrical outlets or extension cords as this can result in fire or electric shocks.

15